



Empower and Entrust
Hill Avenue Academy
Early Years Newsletter
11th September 2020



Welcome Back!

It has been a pleasure to welcome back all of our returning children and also to meet all of the children that are new to our school. They are quickly beginning to adapt to new routines and have been busy exploring their new learning environments.

Thank you for all of your support, especially with the new changes in place due to the circumstances we find ourselves in.

We are so excited to be a part of their learning journey here at Hill Avenue Academy.

All the very best this year from the Early Years Team.

Health and Hygiene



Children's wellbeing is always at the heart of what we do. In current circumstances we ask that children continue to maintain the procedures in place at school in order to stay safe. We ask children to regularly wash their hands and sanitise them using anti-bacterial hand gel and appreciate your support with reminding them too.



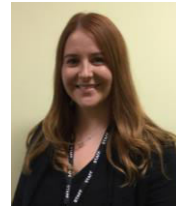
Hot school meals return next week. You will be able to order this on parentmail.

If you choose to send your child with a packed lunch and are looking for inspiration we highly recommend this document.

Reception (RS)



Miss Savin



Miss Slater

Nursery



Physical Development

All children have access to the outdoor learning environment on a daily basis to encourage the development of physical skills. Additionally, they have a P.E session each week. Due to current circumstances we ask that children come to school wearing their kit on **a Monday**.

Our school PE kit is white t-shirts and black or navy shorts with trainers or plimsolls. In the colder weather please can children wear dark tracksuit bottoms (navy or black) and a white t-shirt or plain black/ navy sweatshirt/hoodie. We ask that children refrain from wearing Football strips, logos, patterned or brightly coloured fashion clothing.

Children will also access Forest school weekly. This will be on Thursday for RNB and Friday for RS.



Mrs Element-Brown Reading **Miss Langston**

We are avid promoters of reading and the development of phonetical skills in Reception. We follow a phonics scheme called Floppy Phonics. Usually a reading book would have been sent home with your child. Unfortunately due to Covid, we are not able to send reading books home yet. In light of this, we will be adding home learning challenges to the school website (home learning page).

Forest school

We are very lucky to have access to a forest school on our school site. We ask that children wear wellies in forest school. They will need to bring these in a plastic carrier bag.

Names

Please make sure water bottles, jumpers, coats, wellies, lunch boxes, hats, scarves are all clearly labelled.

Water bottles

We ask children to bring a water bottle each day which they can access independently throughout the day.

Reception (RNB)



Mrs Brown



Mrs Nicholls



Miss Woolley

Useful Links

School Website:

<https://www.hillavenueacademy.com/children/home-learning-page-hill-avenue>

Reception transition information:

www.hillavenueacademy.com/parent/newsletters

YouTube:

https://www.youtube.com/channel/UCp1YU1_MXpxWdTytnsE40Wg

OUR

Learning

CLL

Children will listen to stories in small groups. They will learn how to use prepositional language through a range of practical learning opportunities. Children will develop their understanding of vocabulary linked to the topic and will be given lots of opportunities to use this in play.

PSED

Children will focus on forming relationships with new friends and with adults. They will learn about school routines and will begin to adapt to these. We will create opportunities such as circle time (in small groups) for children to share news/ideas to build their confidence.

PD

Children will learning about hygiene, for example the importance of hand washing. In P.E children will be encouraged to develop dressing skills for example putting on own trousers and jumper. Children will begin to learn how to use scissors and other tools carefully.

Curriculum enrichment

Classroom environment changed regularly (home corner, three bears cottage, doctors surgery, fruit and vegetable store)
Goldilocks will make an appearance in the classroom.
Parents will be invited to join in with some phonics learning.
Making pumpkin soup.
Children will have weekly forest school sessions where they will have chance to explore our local environment.

Marvellous Me



Key texts

Marvellous Me
Goldilocks and the three bears
Elmer and the lost teddy
Funny bones
Pumpkin soup

We will also explore a range of non-fiction texts that relate to people who help us and keyworkers.



Literacy

In Literacy, children will listen to a range of stories. They will begin to name main characters in stories and begin to sequence events. Children will access a reading corner where they can choose stories to look at and will learn skills such as how to handle books carefully.

Mathematics

In mathematics children will learn to recite numbers to 10. They will be learning about ordering and comparing sizes by using objects from Goldilocks and the three bears. Children will learn about positional language and use this to describe Funny Bones characters. They will experiment with 2d shapes and use these to make pictures.

EAD

In Expressive Arts and Design, children will use various materials to create self-portraits and Elmer pictures. Children will join in with dancing and games linked to the learning theme that week. Children will be learning songs with actions for example the train song and the farmers in his den.

UTW

Children will be learning about special occasions such as birthdays and will have the opportunity to share these events with others. Children will learn how to use simple equipment in the classroom. Children will be learning about similarities and differences between people. Children will learn about their local environment. They will also be comparing past and present pictures.